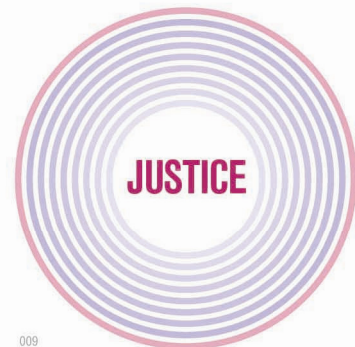
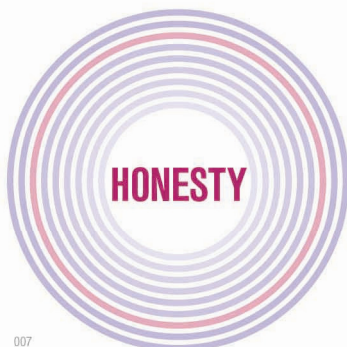
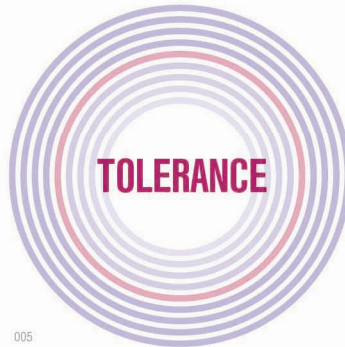
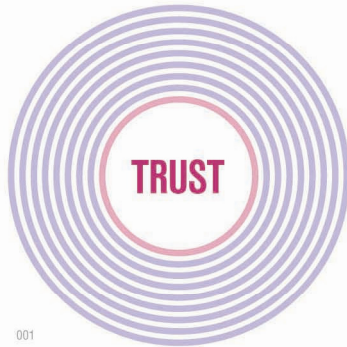


# learningforlife



## Developing character

## Developing Character

The focus of this exercise is to get primary school children to identify the actions, thoughts and words of a person with particular characteristics. The sheet below is meant as a prompt sheet for discussion. Get the children to work in pairs initially to discuss the issues presented on the sheet and to write down their thoughts on a copy of this table.

Another way would be to get different groups to initially think about just one of the character traits. Each group could then feedback their findings and these could be added onto a large table displayed for the whole group.

<b>Character Trait</b>	<b>Make a list of the actions/ thoughts/ words that would help you to know that a person had each of these characteristics</b>	<b>Do you have these characteristics? How do you know?</b>	<b>What could you do to develop them further?</b>
<b>Helpful</b>			

<b>Kind</b>			
<b>Responsible</b>			
<b>Friendly</b>			

Copywrite: Character Education Ltd (2008)

Learning for Life is run by Character Education Ltd (company number: 06505583). Reg Office: 17 Silk Hill, Buxworth, High Peak, SK23 7TA

<b>Loyal</b>			